

# LUDLOW DRESS HACK

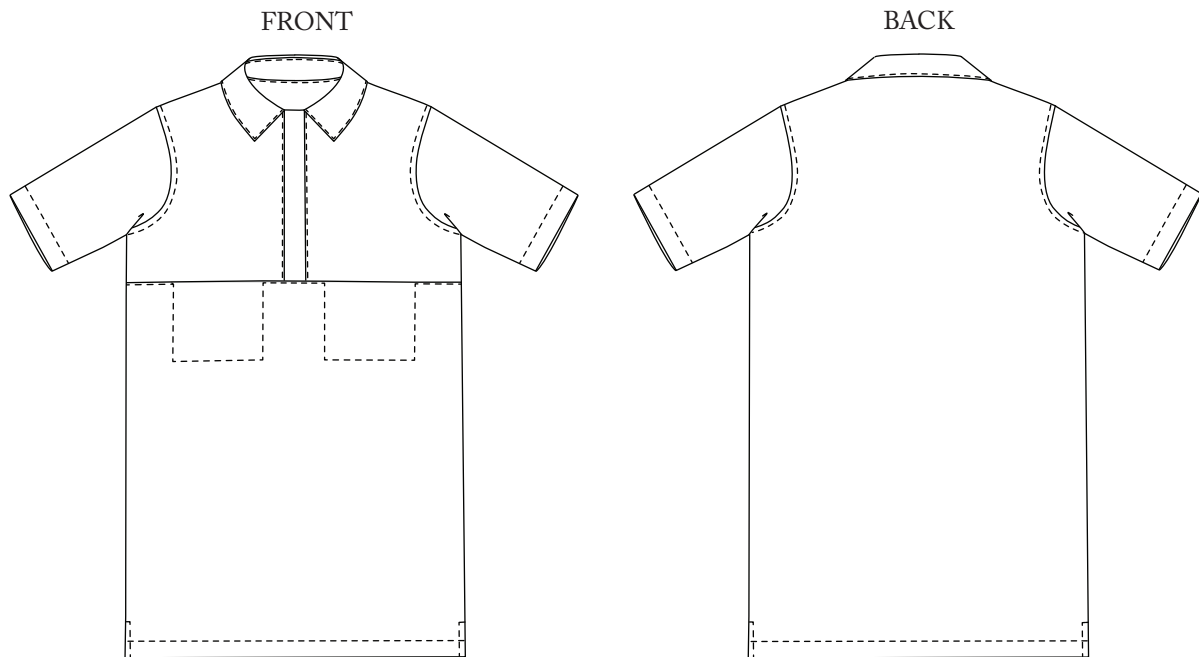
This hack tells you how to convert the Ludlow into a dress with short sleeves.

## FINISHED MEASUREMENTS

CB length is 98.8(100, 101.2, 102.5, 103.8, 105.1)cm down from the neck. *Sizes S to XXL are shown in brackets.*

Sleeve length at under arm is 14cm.

Please check the Ludlow finished measurements, but as a guide we would suggest the following conversion:  
XS=6-8, S=10-12, M=14-16, L=18-20, XL=22-24, XXL=26-28.



## FABRIC REQUIREMENTS - Use existing layplans - in most cases pattern piece 7 will need moving.

	XS-S	M-L	XL-XXL
<b>110cm/43½" wide</b> (with or without nap)	3M/3¼yd	3.7M/4¼yd	3.9M/4¼yd
<b>120cm/47" wide</b> (with or without nap)	2.8M/3¼yd	3.2M/3½yd	3.8M/4¼yd
<b>140cm/55" wide</b> (with or without nap)	2.5M/2¾yd	2.8M/3¼yd	3.2M/3½yd
<b>150cm/60" wide</b> (with or without nap)	2.4M/2¾yd	2.6M/3yd	2.9M/3¼yd

## YOU WILL NEED

MATCHING THREAD  
CONTRAST THREAD (OPTIONAL)  
4 X 1.5CM/¾" BUTTONS  
0.4M/½YD INTERFACING

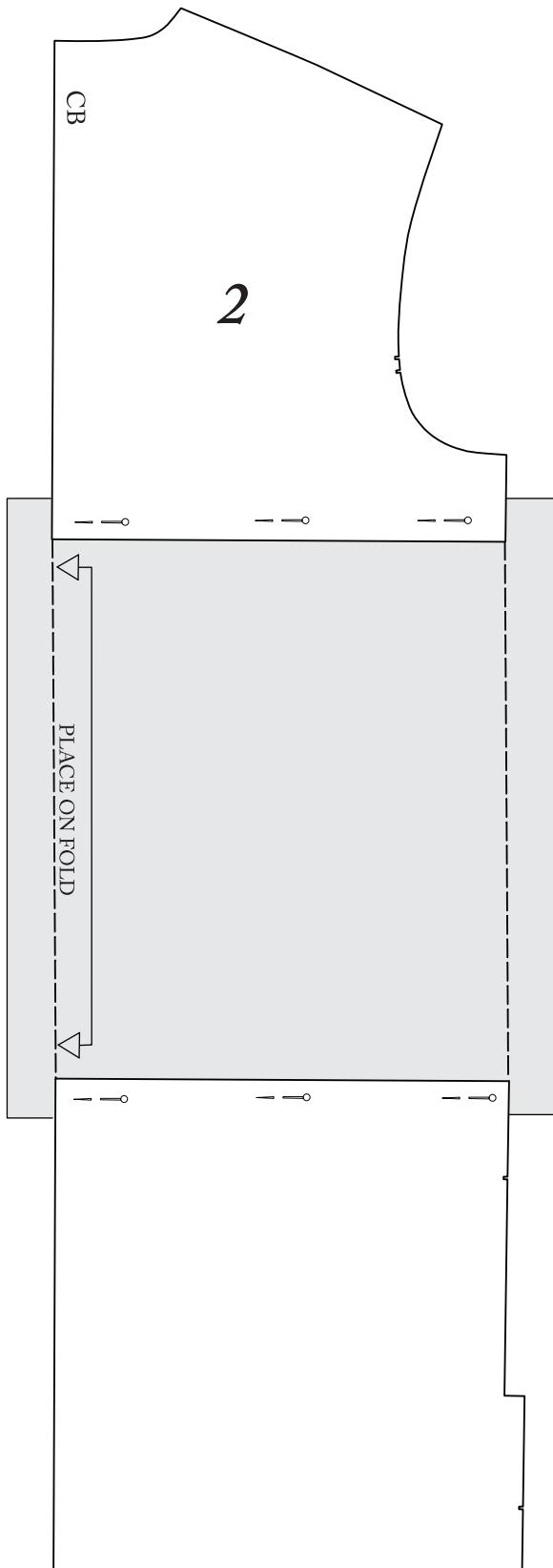
## SUGGESTED FABRIC

COTTON POPLIN, COTTON CHAMBRAY,  
INDIAN HANDLOOMS, HEMP/COTTON,  
LIGHTWEIGHT DENIM 4-6OZ.

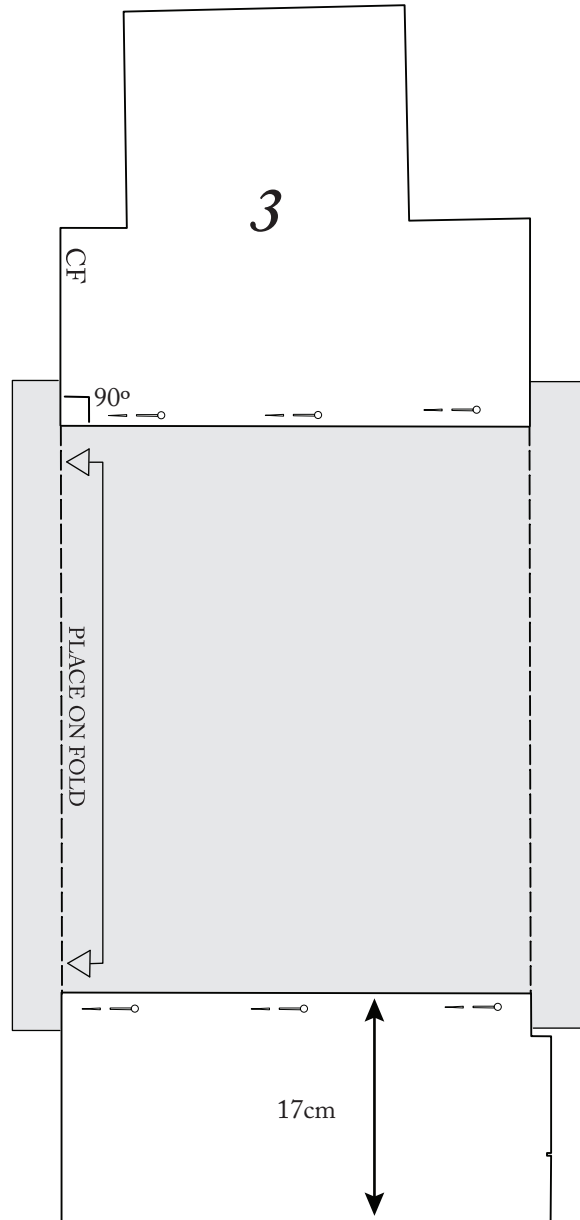
# MERCHANT & MILLS

## ADAPT YOUR PATTERN

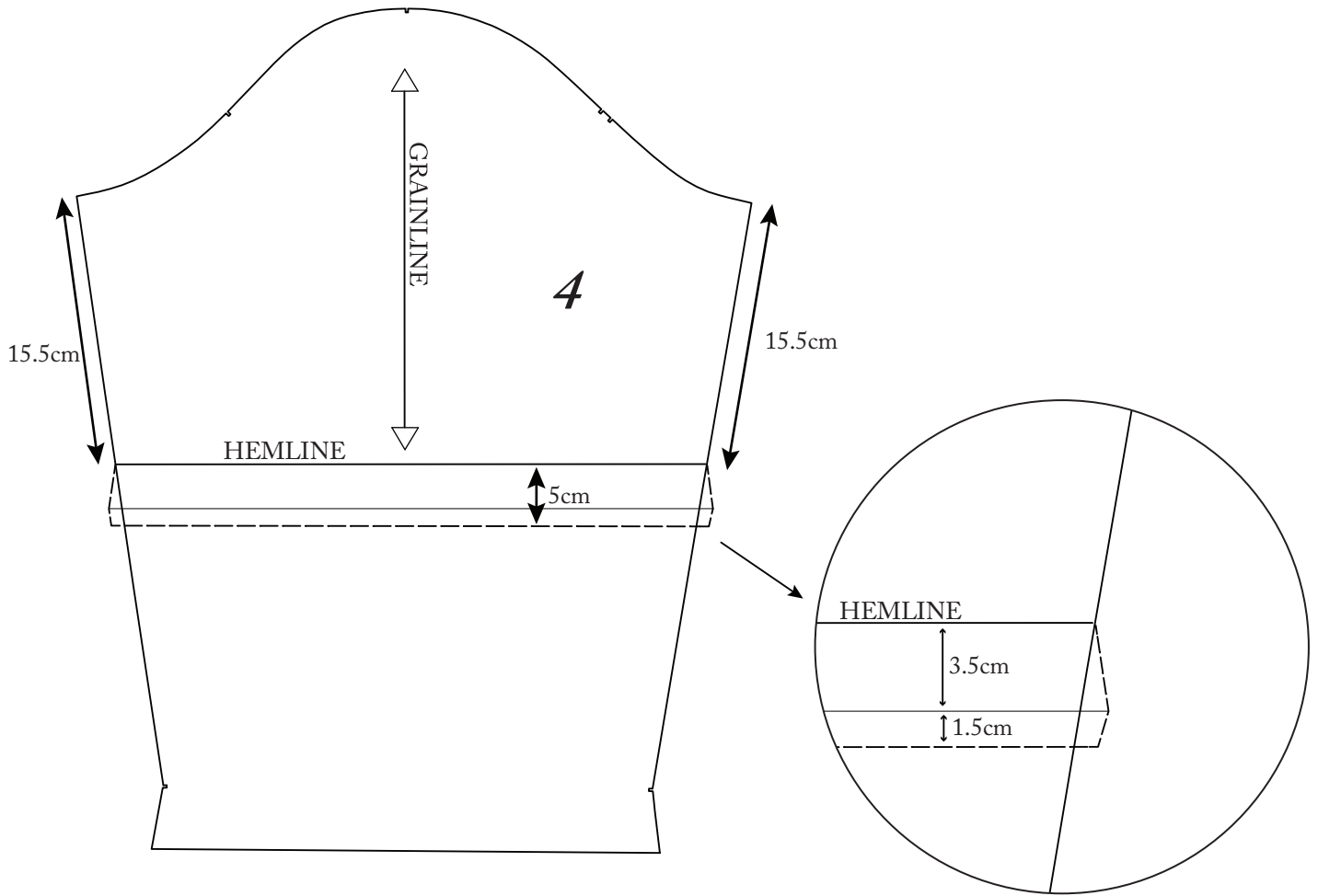
1. Cut along the LENGTHEN OR SHORTEN HERE LINE on the BACK (2) and add 32 cm, keeping the CB line straight. Draw the new lines (show here with broken lines) and cut along these lines.



2. Create a new LENGTHEN OR SHORTEN HERE LINE on the BOTTOM FRONT (3) 17cm up from the bottom edge and at a right angle to the CF. Add 32 cm, keeping the CF line straight. Draw the new lines (show here with broken lines) and cut along these lines.



3. Create short sleeve by measuring down the SLEEVE (4) 15.5cm at each side and draw a new hemline. Add 5cm seam allowance (see note for angle of the hem). Cut off the excess.



### MAKE UP

Follow the instructions for the Ludlow.

Fold up 1.5cm seam allowance, then fold up 3.5cm. Trace the side seam line through all layers. This gives you the angle needed when the hem is turned up.