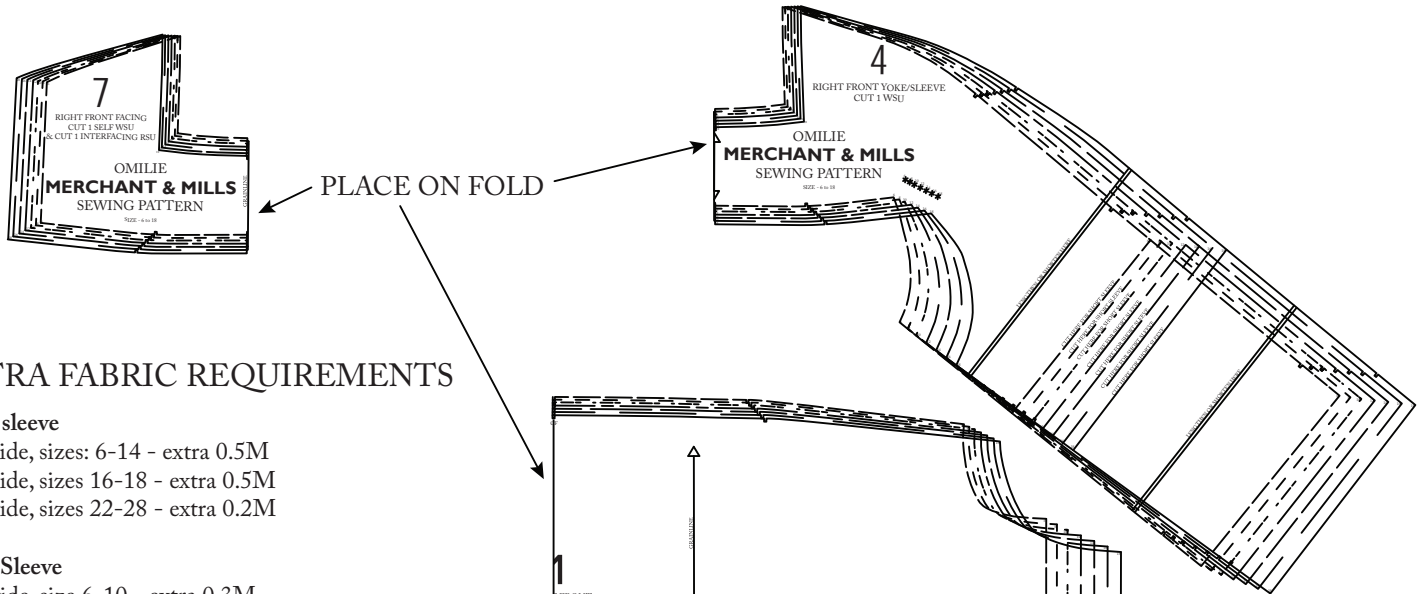


OMILIE HACK

This hack tells you how to remove the button placket on the Omilie pattern.

ADAPT YOUR PATTERN

Fold back the RIGHT FRONT (1), RIGHT FRONT YOKE/SLEEVE (4) and RIGHT FRONT FACING (7) along the centre front. These pieces will now be placed on the fold (create a mirror image along this line to create a whole piece). You will not need to cut out LEFT FRONT (2), LEFT FRONT YOKE/SLEEVE (5) and LEFT FRONT FACING (6).



EXTRA FABRIC REQUIREMENTS

Short sleeve

140 wide, sizes: 6-14 - extra 0.5M
150 wide, sizes 16-18 - extra 0.5M
150 wide, sizes 22-28 - extra 0.2M

Long Sleeve

150 wide, size 6-10 - extra 0.3M

RESTRICTIONS FOR LONG SLEEVES ON SOME FABRIC WIDTHS

Sizes 6-8, minimum fabric width is 120cm
Sizes 10-18, minimum fabric width is 140cm
Sizes 18-26, minimum fabric width is 140cm
Size 28, minimum fabric width is 150cm

INSTRUCTIONS

IGNORE STEP 1

STEP 2

Ignore LEFT FRONT (2) and LEFT FRONT FACING (6).

There is no need to interface the new FRONT (1).

Treat RIGHT FRONT YOKE/SLEEVE (4) and LEFT FRONT YOKE/SLEEVE (5) as one piece

IGNORE STEP 3

STEPS 4-23

Repeat the instructions for steps 4-23, whilst treating RIGHT FRONT (1) and LEFT FRONT (2) as one piece, RIGHT FRONT YOKE/SLEEVE (4) and LEFT FRONT YOKE/SLEEVE (5) as one piece and RIGHT FRONT FACING (7) and LEFT FRONT FACING (6) as one piece.

Ignore the instructions for button and buttonholes.

