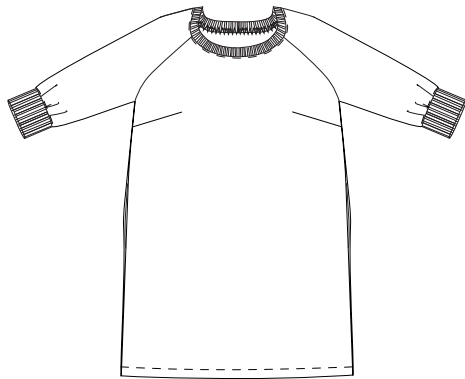


THE FIELDER VARIATIONS & MENS TEE SHIRT

INFORMATION AND INSTRUCTIONS FOR USING PRE-MADE RIBS WITH A FINISHED EDGE

DRESS

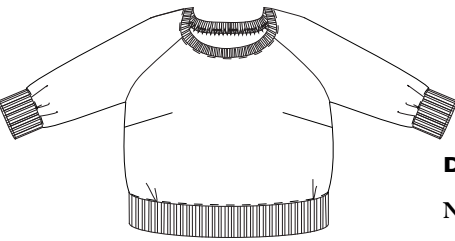


RIB STRIPS NEEDED:

MERCHANT & MILLS stock a wide variety of pre-made ribs. Based on the rib sections being 103cm wide you will need the following pieces per garment:

	6-8	10	12	14-18	20-28	MENS 38-46
DRESS	1	1	1	2	2	
TOP (WITH BOTTOM RIB)	2	2	3	3	3	
TOP (NECK & CUFFS ONLY)	1	1	1	2	2	
CREW NECK TOP (WITH BOTTOM RIB)	2	3	3	3		
CREW NECK TOP (NECK & CUFFS ONLY)	1	2	2	2	2	
MENS TEE-SHIRT						1

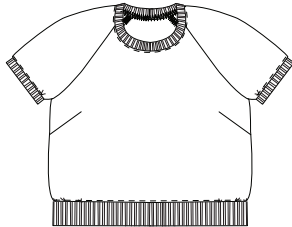
TOP WITH RIB



Use the pattern for the width of rib for each section or use the table below (measurements given in cm).

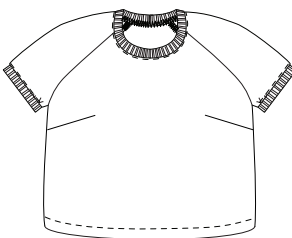
	6	8	10	12	14	16	18	20	22	24	26	28
DRESS												
NECK RIB	53	54.25	55.5	57	58.5	60	61.5	61.5	63.25	65	66.75	68.5
SLEEVE CUFF X2	20.5	21.1	21.6	22.2	22.8	23.4	24	25	25.6	26.2	26.9	27.5

CREW NECK TOP SIZES 6-18



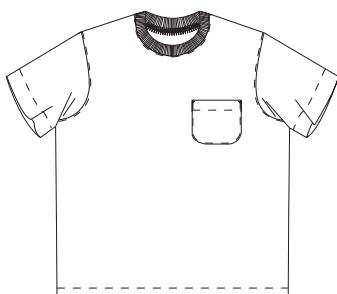
	6	8	10	12	14	16	18	20	22	24	26	28
TOP WITH RIB												
NECK RIB X 1	53	54.25	55.5	57	58.5	60	61.5	61.5	63.25	65	66.75	68.5
SLEEVE CUFF X 2	20.5	21.1	21.6	22.2	22.8	23.4	24	25	25.6	26.2	26.9	27.5
FRONT BOTTOM RIB X 1	42.5	44.5	47	49.5	52	54.5	57	60	63.25	66.5	69.75	73
BACK BOTTOM RIB X 1	49	51.5	54	56.5	59	61.5	64	67	70	73	76	79

CREW NECK TOP SIZES 20-28



	20	22	24	26	28
CREW NECK TOP					
NECK RIB X 1	41	42.25	43.5	45	46.5
SLEEVE CUFF X 2	29	30	31	33.5	34.75
FRONT BOTTOM RIB X 1	42.5	44.5	47	49.5	52
BACK BOTTOM RIB X 1	49	51.5	54	56.5	59

MENS TEE SHIRT



	38	40	42	44	46
MENS TEE-SHIRT					
NECK RIB X 1	38.5	40.5	42.4	44.5	46.5

RIB STRETCH:

The ribs we have used for these calculations stretch by half again. If using an alternative, always check rib stretch on a 10cm measurement. If it stretches to less than 15cm, cut with generous seam allowance (5cm) then pin, tack and try on.

DIFFERENCES WHEN USING PRE-MADE RIBS

- All of the instructions for The Fielder Variations and Mens Tee-Shirt describe using ribbing fabric on the roll. For each section where the rib is used, we have created a seam and then folded the rib in half to enclose the seam and create a finished edge (fold). With the pre-made ribs you have a finished edge and therefore the rib does not need to be folded.

- All the pre-made strips are of a set width and length, generally: 103cm wide and 6cm deep.

CREATE RIB

Instruction numbers: 7, 12 & 16 (Fielder) and 4 (Mens Tee-Shirt).

1. For necklines, trim your rib depth to 3.5cm (for a 2.5cm finished ribbing). For cuffs and bottom ribbing the 6cm depth will give you a finished rib of 5cm.



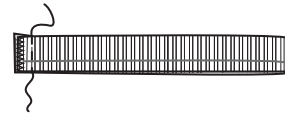
2. Neaten each end of rib section with an overlock or zigzag.



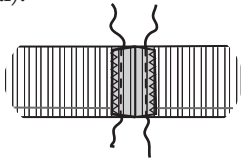
3. On the wrong side mark (with chalk or disappearing pen) an extra guide where you intend the seamline to be (so your rib will end up 2.5cm, giving you a 1cm seam allowance).



4. With right sides together stitch rib sections together as described in the instructions (bottom ribs will need two side seams).

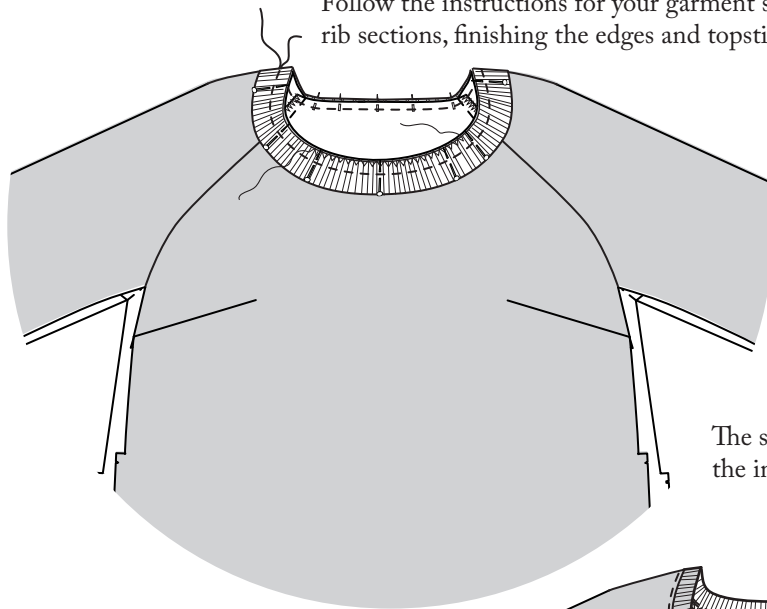


5. Press seams open and topstitch each seam down (optional).



ATTACH RIB

Follow the instructions for your garment style for attaching the rib sections, finishing the edges and topstitching down.



The seam will be visible from the inside.

