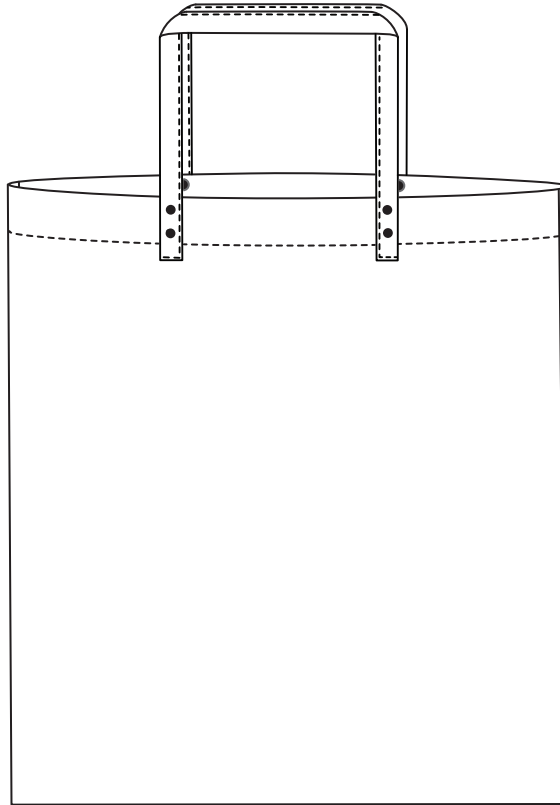


RUNNER TOTE BAG

Instructions for making a simple tote from our Jute Runner and Split Cowhide straps (optional).

Seam allowances are 1.5cm (included in the cutting formula) unless stated otherwise.

Skill level: Beginner



SUGGESTED FABRIC

MERCHANT & MILLS JUTE RUNNER.

YOU WILL NEED

MATCHING THREAD

FABRIC: 1M/1¼YD RUNNER FABRIC

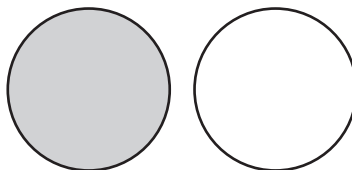
STRAPS: SPLIT COWHIDE 2CM/¾" X 112CM/44¼"

IF MAKING STRAPS FROM ALTERNATIVE FABRIC - SEE CUTTING FORMULA

8 X RIVETS

10 X 10CM/4 X 4" FIRM FABRIC SUCH AS DRY OILSKIN OR DENIM FOR WASHERS

FABRIC KEY



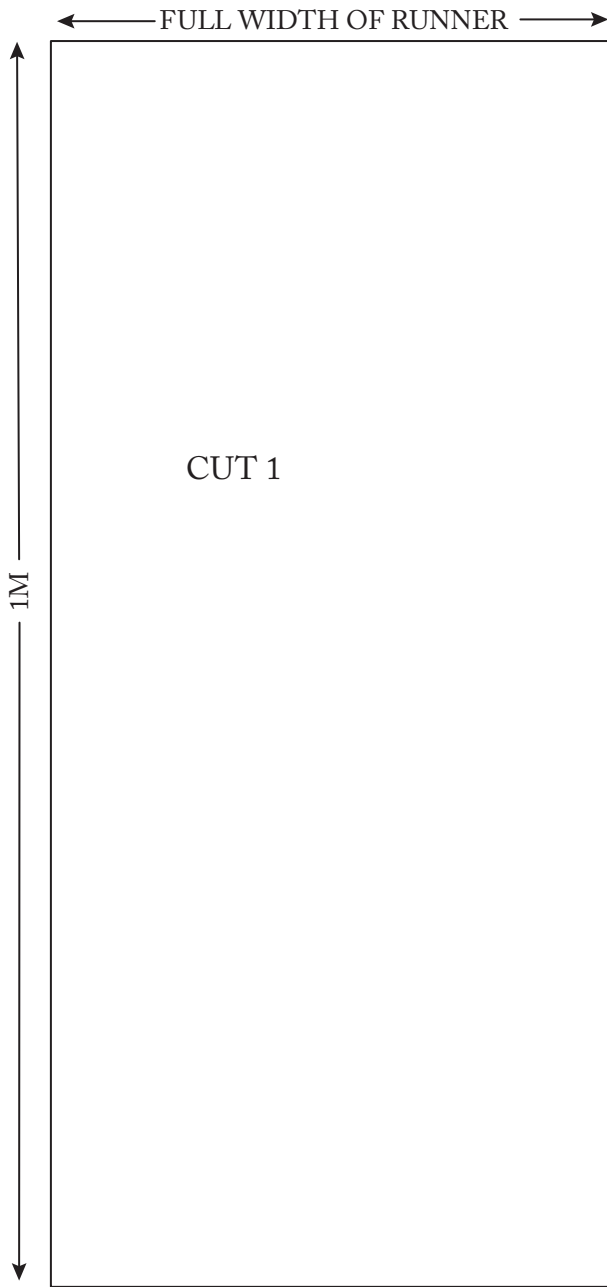
RIGHT SIDE
SELF

WRONG SIDE
SELF

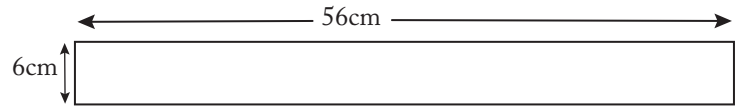
MERCHANT & MILLS

CUTTING FORMULAS

FRONT & BACK

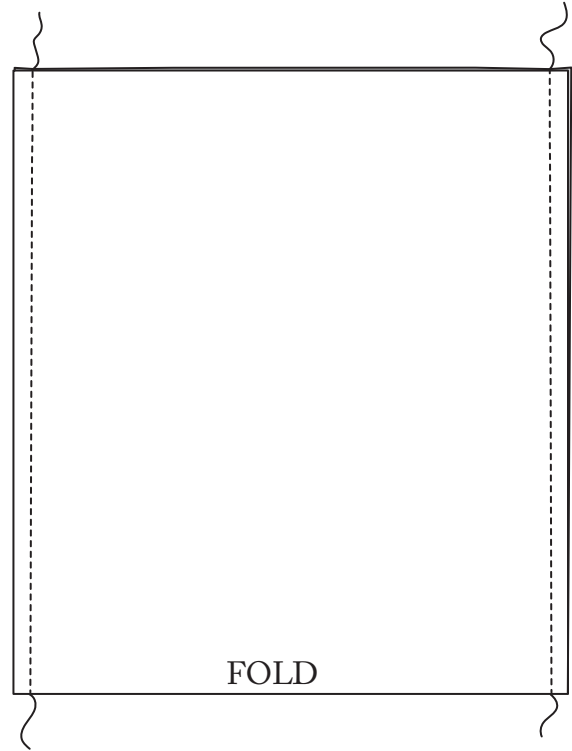


2 X STRAPS (OPTIONAL, IF NOT USING LEATHER)

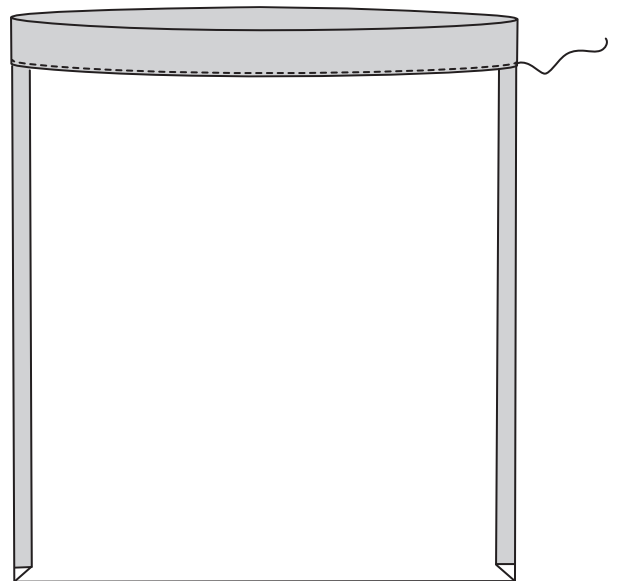


SEWING METHOD

1. With right sides together, fold FRONT & BACK in half. Stitch side seams and press open.

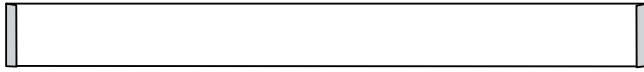


2. Press in 1.5cm at the top edge, and then another 4.5cm. Stitch close to the folded edge.



2 X STRAPS (OPTIONAL, IF NOT USING LEATHER)

3. Press in 1cm at each short edge of each strap.



Press in 1cm at the two long edges, then press in half and edgestitch all sides.



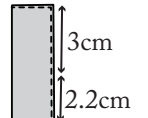
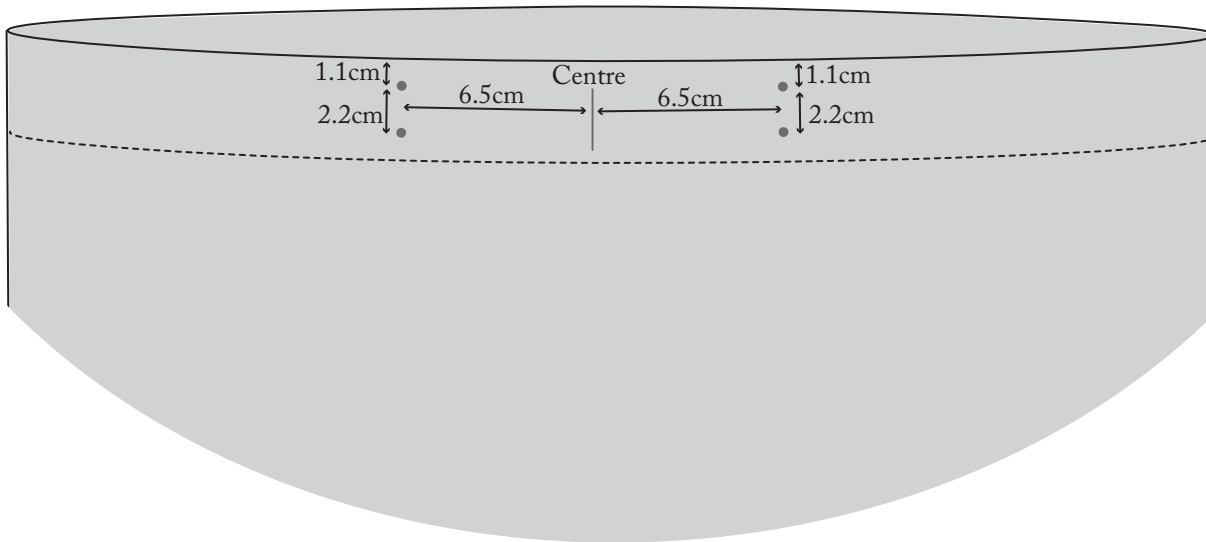
MAKE WASHERS

4. Cut out 8 x 1.5cm diameter circles from your 10 x 10cm/4 x 4" piece of fabric. Drill a hole through the centre of each one.

MARK RIVET POSITIONS

5. Mark the FRONT and BACK. From the centre measure 6.5cm. Then measure 1.1cm, then 2.2cm down from the top.

6. Mark the centre of the STRAP 3cm, then 2.2cm away from each end.



APPLY RIVETS

7. Drill holes where marked on the bag and strap and apply rivets with a washer at the back - order from outside to inside: top of rivet, strap, bag, washer and bottom of rivet.

