

Before you begin!

PRINTING

DO NOT SCALE to fit page. Before printing pattern, print out this page and measure the test square. The square should measure 10 x 10 cm. Experiment with scale to get the test square exactly 10 cm. For most printers this will mean printing at 100%

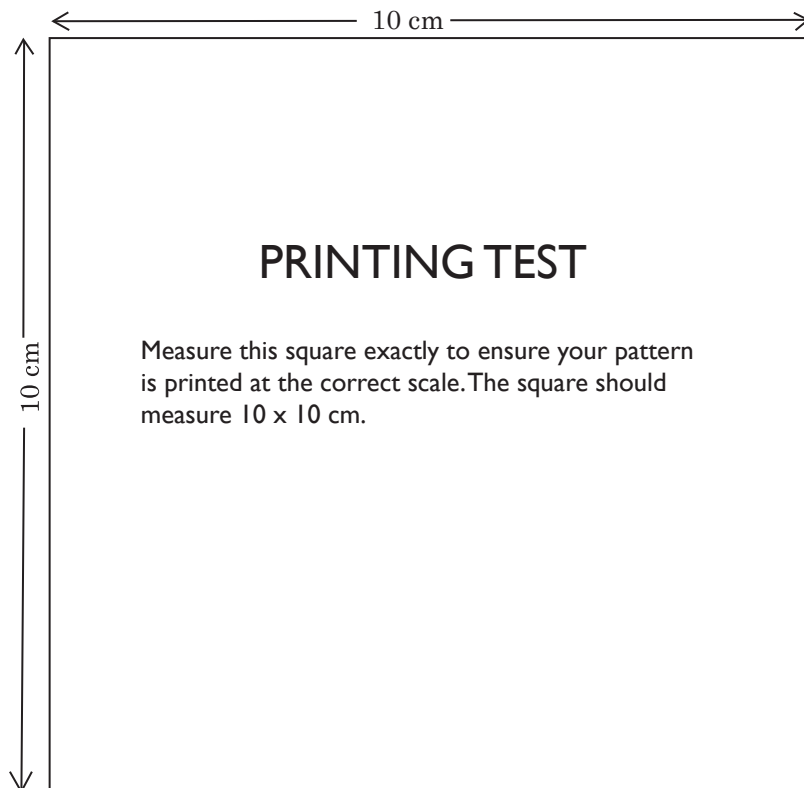
PRINTING Before you begin!

Printer: Canon iP4800 series 2
Presets: Default Settings
Copies: 1
Pages: All
Paper Size: A4 (210 by 297 mm)
Orientation: Portrait
Scale: 100%
Copies per page: 1

PRINTING TEST
Measure this square exactly to ensure your pattern is printed at the correct scale. The square should measure 10 x 10 cm.

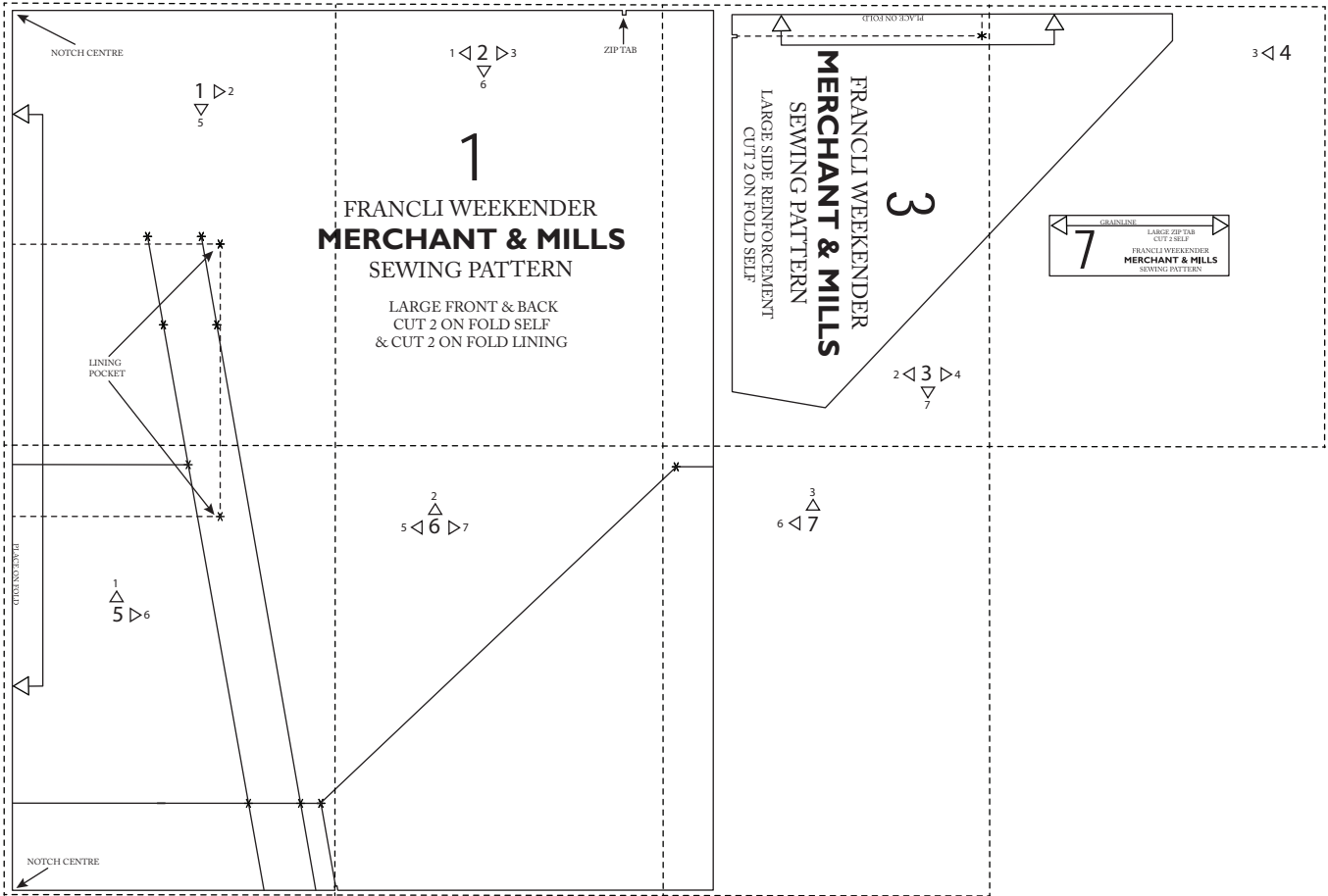
1 of 9

PDF Hide Details Cancel Print



How To Use This Pattern

The full size pattern has been made into tiled sections and is numbered 1 to 7. Each section will have a border which can be cut off on one side only, enabling you to have an underlap when you tape the sections together. There are also arrows with information on matching sections. We recommend sticking your pages together to create rows first, then attaching your rows.

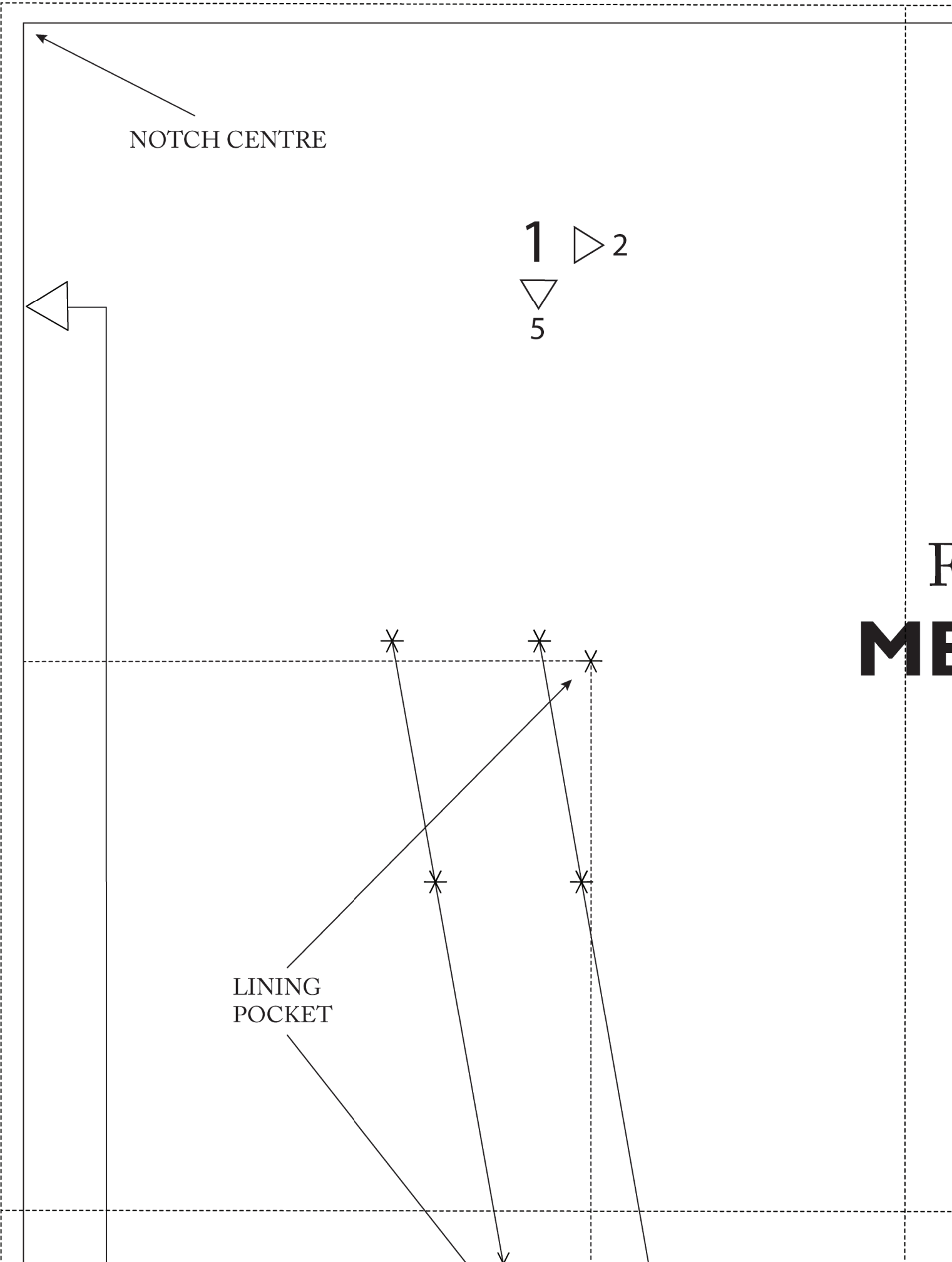


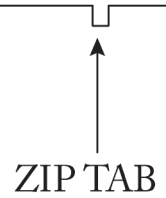
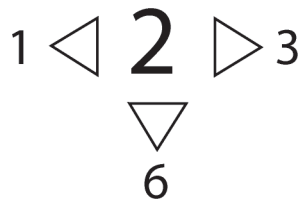
NOTCH CENTRE

1 2
5

LINING
POCKET

F
ME





1

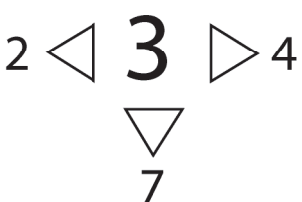
FRANCLI WEEKENDER
MERCHANT & MILLS
SEWING PATTERN

LARGE FRONT & BACK
CUT 2 ON FOLD SELF
& CUT 2 ON FOLD LINING

PLACE ON FOLD



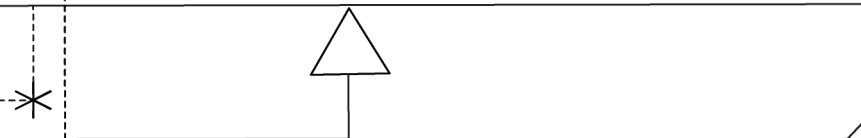
3



FRANCIS WEEKENDER MERCHANT & MILLS SEWING PATTERN

LARGE SIDE REINFORCEMENT
 CUT 2 ON FOLD SELF





3 ◁ 4

GRAINLINE

7

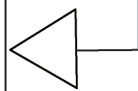
LARGE ZIP TAB
CUT 2 SELF

FRANCLI WEEKENDER
MERCHANT & MILLS
SEWING PATTERN

PLACE ON FOLD

1
△
5 ▷ 6

NOTCH CENTRE



2
△
5 ◁ **6** ▷ 7

